

**Product:** Anti-Deg1 ( Protease Do-like 1, chloroplastic)  
**Product no:** AS07 246

Antibodies for plant sciences

## Product Information

**Antibody clonality:** Polyclonal  
**Raised in:** Rabbit  
**Purity:** Total IgG in PBS  
pH 7.4  
**Quantity:** 360 ug

**Antibody form:** Lyophilized. For reconstitution please add 200 ul of sterile water.  
Please, remember to spin tubes briefly prior to opening them to avoid any losses that might occur from liquid or lyophilized material adhering to the cap or sides of the tubes.

**Storage instructions:** -20°C or -80°C long term storage (years). Please, avoid freezing and thawing of antibodies.  
Make aliquots instead.

## Application information:

**Western Blot:** recommended dilution 1: 500 with ECL

**MW:** 46 kDa

**Reactivity:** *Arabidopsis thaliana*, *Pisum sativum*

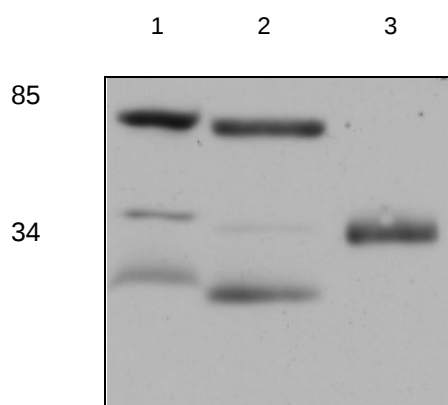
Note: unspecific reaction at ca. 30 kDa and ca. 85 kDa

## Background:

Deg1 belongs to S1 chymotrypsin protease family and contains 16 protein members in *Arabidopsis thaliana*. Deg1 is localized to chloroplast.

## Immunogen:

Recombinant Deg1 of *Arabidopsis thaliana* overexpressed in *E.coli*



From left to right: *Pisum sativum* thylakoid fraction (1); *Arabidopsis thaliana* thylakoid fraction (2); Recombinant Deg1 expressed in *E.coli* (3);

(5 ug of total chlorophyll was loaded per lane)

*Antibodies are intended for the research use only not for diagnostic or therapeutic use.*

Product support: [inquiry@agrisera.com](mailto:inquiry@agrisera.com), <http://www.agrisera.com>